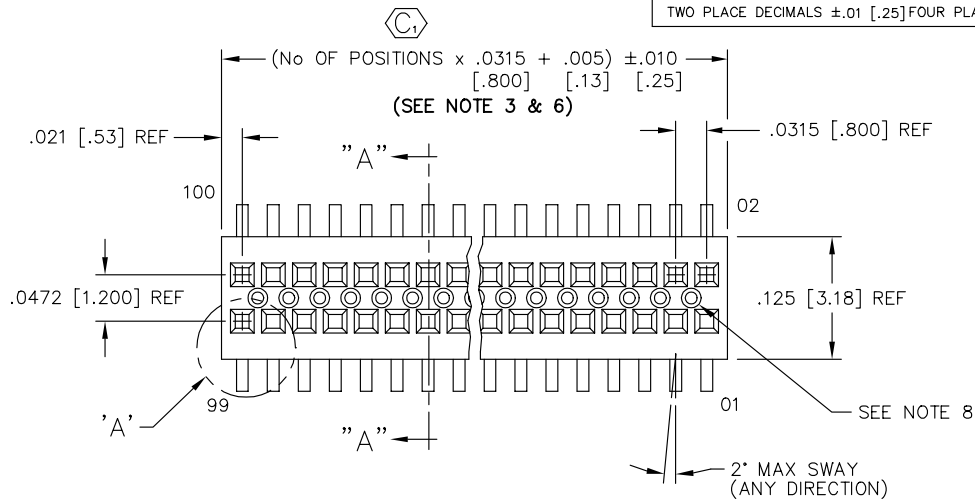


DIMENSIONS ARE IN INCHES		UNLESS OTHERWISE NOTED	TOLERANCES ARE:
ONE PLACE DECIMALS ±.1 [2.54]	THREE PLACE DECIMALS ±.005 [.13]	ANGLES ± 2°	
TWO PLACE DECIMALS ±.01 [.25]	FOUR PLACE DECIMALS ±.0020 [.05]		

TITLE: .8MM x 1.2MM C.L. SOCKET STRIP ASSEMBLY	DWG NO: CLE-1XX-XX-X-DV-XX
	SHEET 1 OF 2



CLE-1XX-XX-X-DV-XX

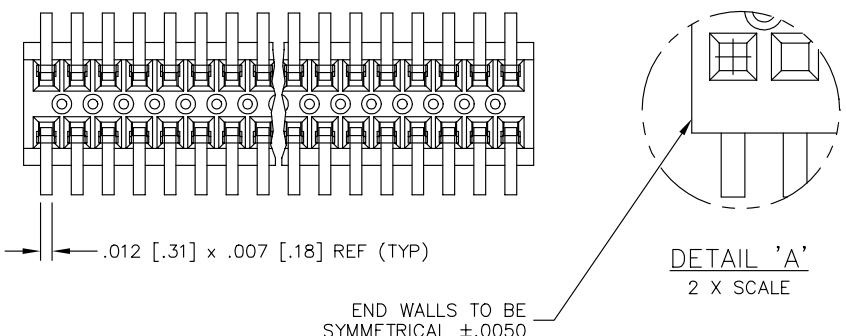
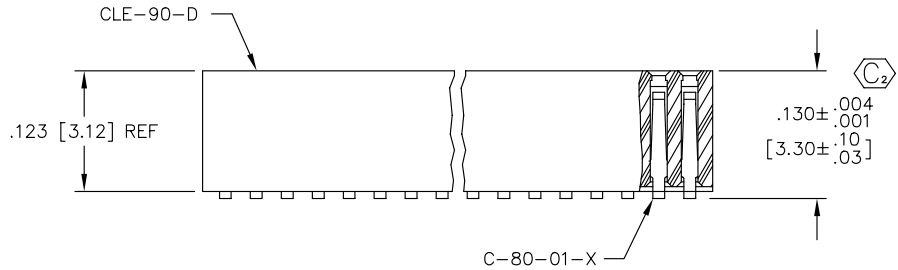
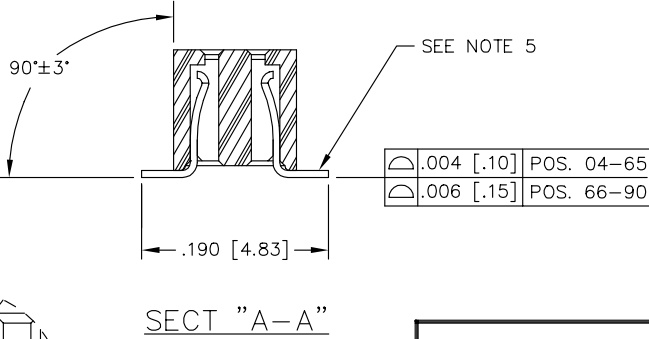
No OF POSITIONS
-04 THRU -90
(PER ROW)

LEAD STYLE SPEC
-01
(USE C-80-01-X)

OPTIONS
-P: PICK & PLACE PAD (SEE FIG. 2, SHT 2)
(AVAILABLE ON POSITIONS -08 THRU -90 ONLY)
(USE MPP-10)
-TR: TAPE & REEL PACKAGING
-A: ALIGNMENT PIN (SEE FIG. 3 & 4, SHT 2)
(MOLDED TO POSITION OR STAKED)
(SAMTEC DISCRETION WHICH -A PIN IS USED)
(STAKE 7 POSITIONS MIN)
(MOLD 4 POSITION MIN)
-K: POLYAMIDE FILM PAD
(AVAILABLE ON POS. 8 THRU 90 ONLY)
(.005 [.13] THICKNESS WITH SILICONE
ADHESIVE)(SEE FIG 5, SHT 2)
(USE K-500-300)

ROW SPEC
-D: DOUBLE ROW- VERTICAL
(USE CLE-90-D)

PLATING SPEC
-F: SELECTIVE FLASH GOLD
.000003 GOLD ON ENTIRE CONTACT
-G: LIGHT GOLD
.000010 GOLD ON ENTIRE CONTACT



- NOTES:
- NOTE DELETED
 - MINIMUM PUSHOUT FORCE: .5 LB.
 - WILL LOSE TWO POSITIONS FOR EVERY CUT MADE. MAXIMUM CUT FLASH TO BE .010 [.25] WITH NO FLASH IN HOLES OR EXTENDING BELOW LEADS.
 - NOTE DELETED
 - BURR ALLOWANCE: .003 [.08] MAX
 - C1 REPRESENTS A CRITICAL DIMENSION.
 - ENDWALL AFTER CUTTING: .0115±.0025 [.292±.064]
 - VOIDS ON TOP SURFACE TO BE LOCATED AT VENDOR DISCRETION TO CONTROL PART WARPAGE.

PROPRIETARY NOTE
THIS DOCUMENT CONTAINS INFORMATION CONFIDENTIAL AND PROPRIETARY TO SAMTEC INC. AND SHALL NOT BE REPRODUCED OR TRANSFERRED TO OTHER DOCUMENTS OR DISCLOSED TO OTHERS OR USED FOR ANY PURPOSE OTHER THAN THAT FOR WHICH IT WAS OBTAINED WITHOUT THE EXPRESSED WRITTEN CONSENT OF SAMTEC INC.

MATERIAL:
BODY: VECTRA E130i
COLOR: BLACK
CONTACT:
BeCu 190 ALLOY [TM04]
THICKNESS: .007±.0002 [.18±.005]

PLOT SCALE: 1 = .1

MISC\MKTG\CLE-MKT

samtec

520 PARK EAST BLVD. NEW ALBANY, INDIANA 47150
PHONE (812) 944-6733 P.O. BOX 1147
CODE 55322

TUBE	PLUG
PT-1-24-01-62	TP-12

TUBE ALL POSITIONS

MADE BY: PURVIS 10-23-95 CLE-1XX-XX-X-DV-XX SHEET 1 OF 2